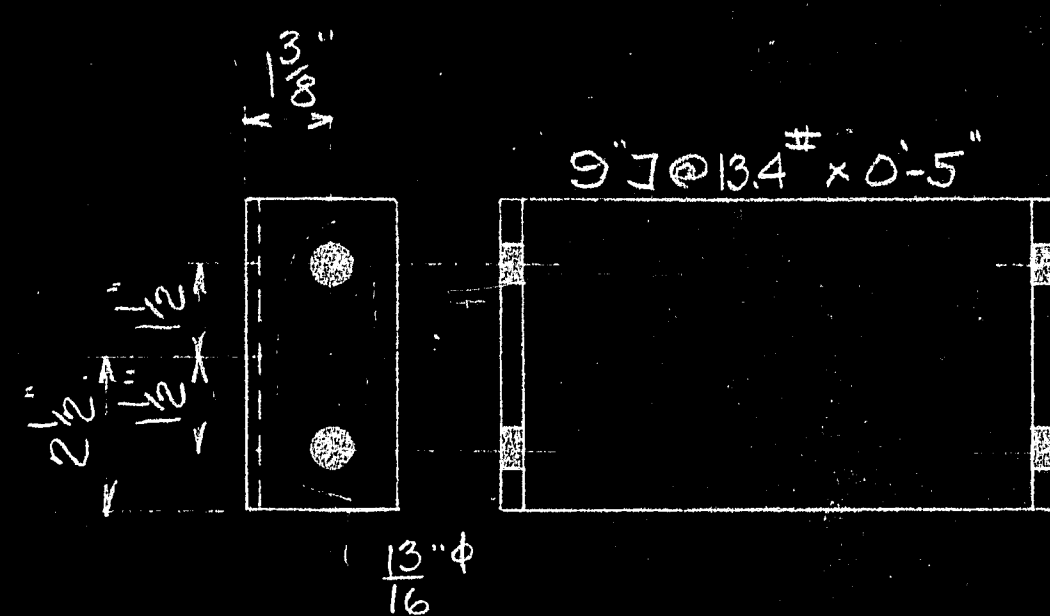
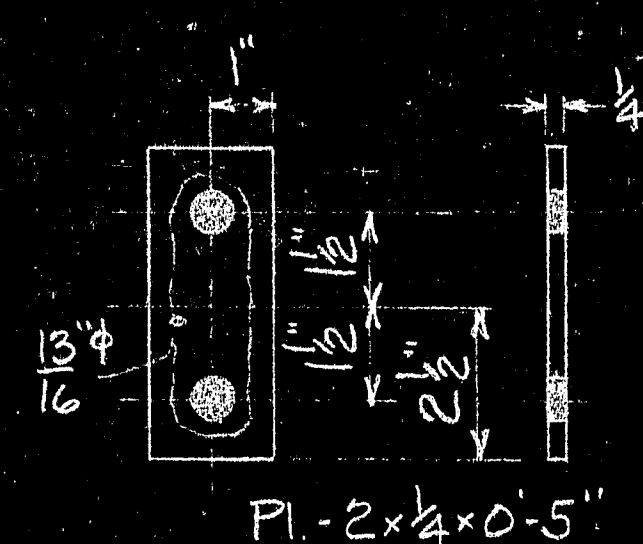


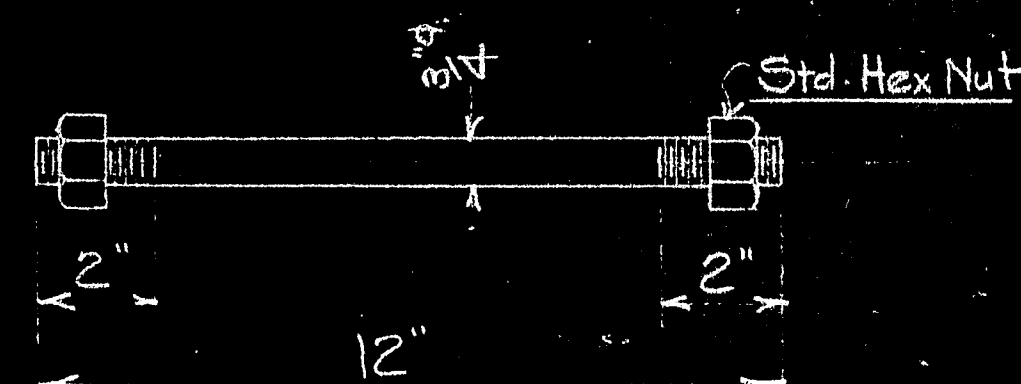
M32-15A-BENT ANGLE



M32-15B-CHANNEL

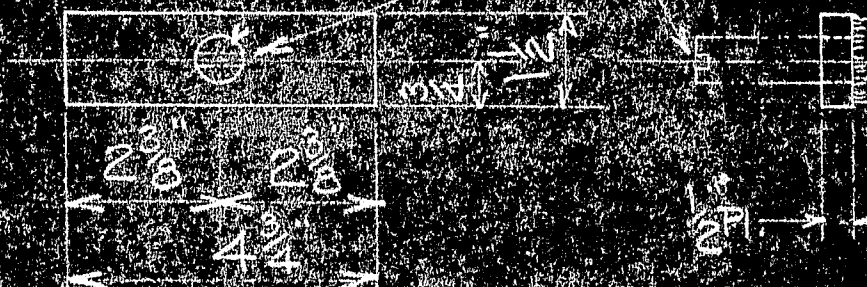


M32-15C-FILLER PLATE

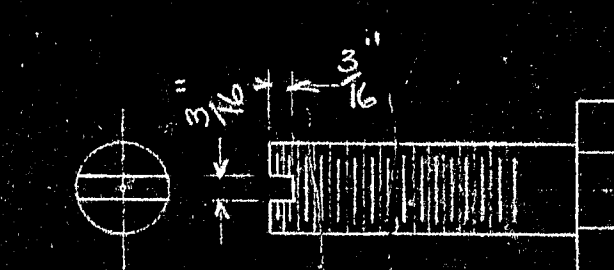


M32-15D-BAR BOLT

M32-15H - Weld to plate with slot parallel as shown by J.A.R.



M32-15F-PLATE



M32-15H-SCREW

Make from 3/4" x 2 1/2" Cap Screw  
Weld to M32-15F

M32-15H	24	See Note	5313	Screw	Weld to M32-15F
M32-15g	125	-	5311	1"-8 Allen Cap Screw - 2 1/2 lg.	
M32-15F	24	Steel	5310-13	Plate	
M32-15E	12	Steel	5310-13	Bent Plate	
M32-15D	32	Steel	5311-	Bar Bolt	
M32-15C	48	Steel	5310-13	Filler Plate	
M32-15B	16	Steel	5310-13	Channel	
M32-15A	8	Steel	5310-13	Bent Angle	

MARK	REQ'D	MAT'L	REQ. NO.	NAME	REMARKS
------	-------	-------	----------	------	---------

BILL OF MATERIAL

JOHN A. ROEBLING'S SONS CO., TRENTON, N. J.

DEER ISLE BRIDGE  
TEMPORARY STAYS  
TOWER SADDLE CONNECTION DETAILS

BY	REVISIONS	DATE	APPROVED	SCALE 1 1/2" x 3" = 1'-0"	SERIAL	SHEET
DES.						
CH. DR.						
ENG'R						

M32 15

